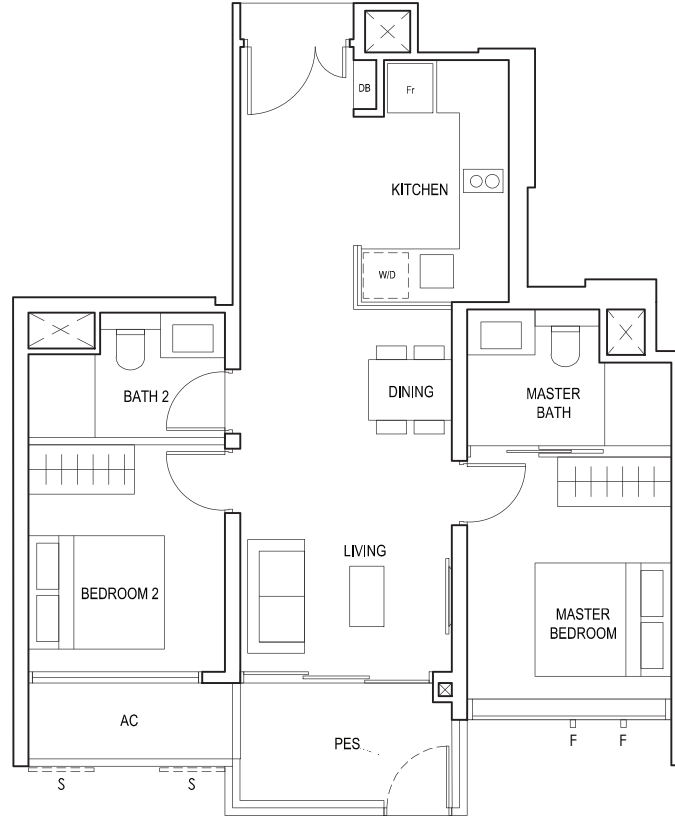


2-BEDROOM PREMIUM

TYPE (2P)a1

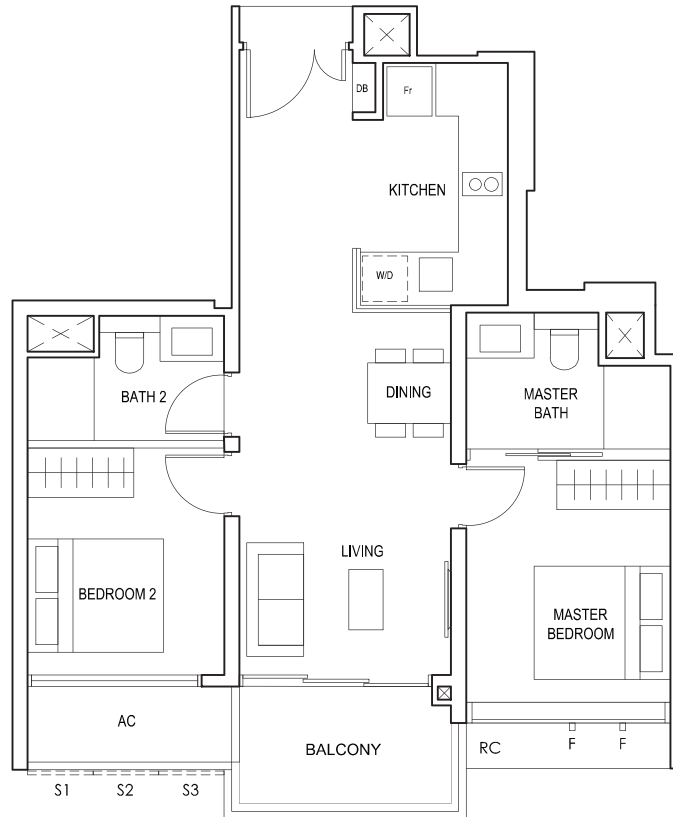
#01-15
65 sq m



S - FULL HEIGHT ALUMINIUM PERFORATED SCREEN
F - FULL HEIGHT ALUMINIUM FIN

TYPE (2P)a

#02-15 to #18-15
65 sq m

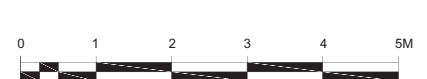
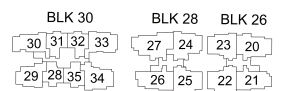
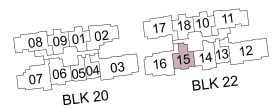


FULL HEIGHT ALUMINIUM PERFORATED SCREEN LOCATED AT LEVELS:
S1 - #02, #03, #05, #06, #07, #09, #10, #11, #13, #14, #15, #17 & #18
S2 - #02, #04, #06, #08, #10, #12, #14, #16 & #18
S3 - #03, #04, #05, #07, #08, #09, #11, #12, #13, #15, #16, #17

F - FULL HEIGHT ALUMINIUM FIN

LEGEND:
Fr - FRIDGE DB - DISTRIBUTION BOARD W/D - WASHER CUM DRYER
AC - AIRCON LEDGE PES - PRIVATE ENCLOSED SPACE RC - REINFORCED CONCRETE LEDGE

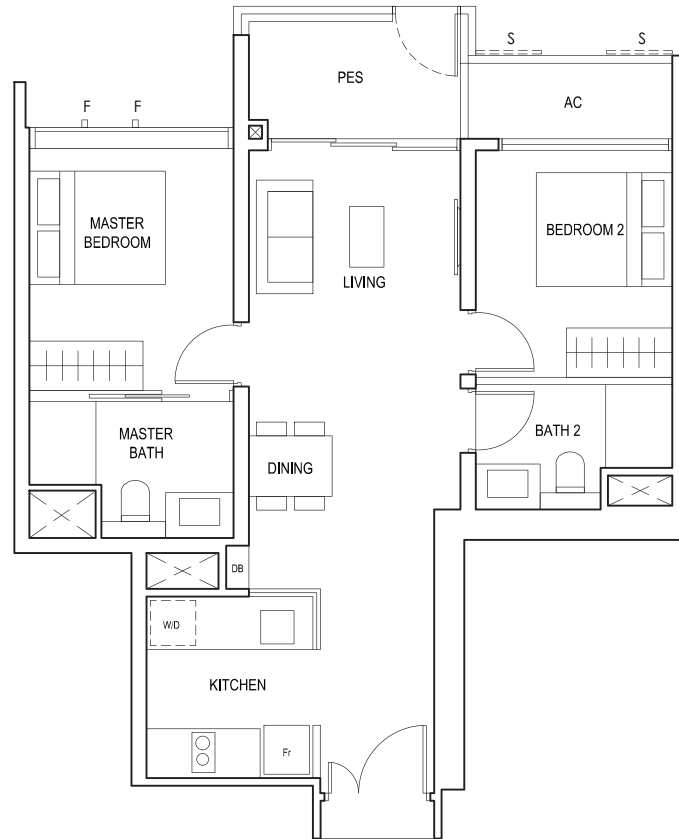
* AREA INCLUDES AIRCON (AC) LEDGE, BALCONY AND PRIVATE ENCLOSED SPACE (PES).
* THE BALCONY/PRIVATE ENCLOSED SPACE (PES) SHALL NOT BE ENCLOSED UNLESS WITH THE APPROVED BALCONY/PES SCREEN. FOR AN ILLUSTRATION OF THE APPROVED BALCONY/PES SCREEN, PLEASE REFER TO THE DIAGRAM ANNEXED HERETO AS "ANNEXURE 1".



2-BEDROOM PREMIUM

TYPE (2P)b1

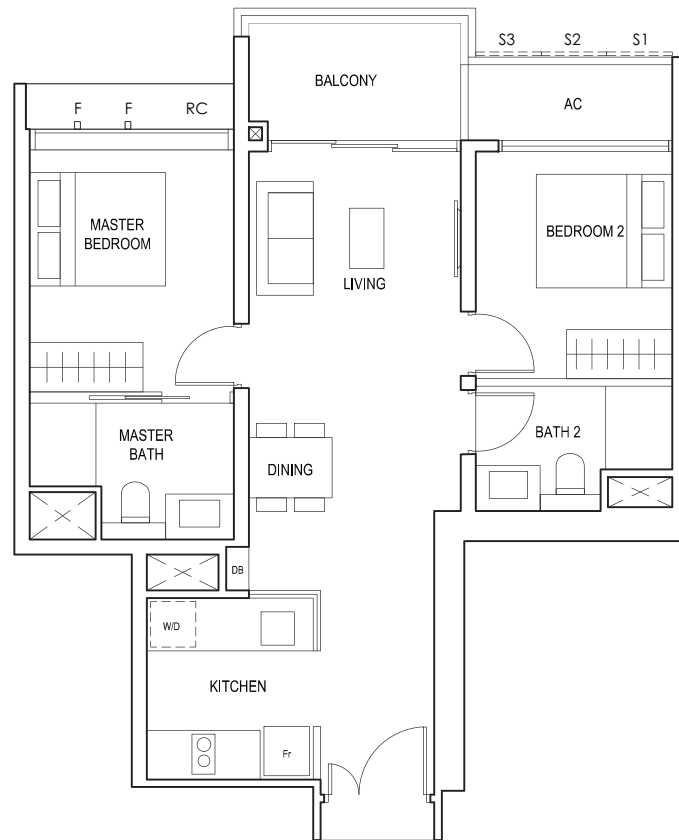
#01-31
66 sq m



S - FULL HEIGHT ALUMINIUM PERFORATED SCREEN
F - FULL HEIGHT ALUMINIUM FIN

TYPE (2P)b

#02-31 to #18-31
66 sq m

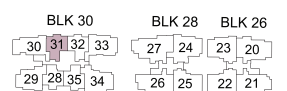


FULL HEIGHT ALUMINIUM PERFORATED SCREEN LOCATED AT LEVELS:
S1 - #02, #03, #05, #06, #07, #09, #10, #11, #13, #14, #15, #17 & #18
S2 - #02, #04, #06, #08, #10, #12, #14, #16 & #18
S3 - #03, #04, #05, #07, #08, #09, #11, #12, #13, #15, #16, #17

F - FULL HEIGHT ALUMINIUM FIN

LEGEND:
Fr - FRIDGE DB - DISTRIBUTION BOARD W/D - WASHER CUM DRYER
AC - AIRCON LEDGE PES - PRIVATE ENCLOSED SPACE RC - REINFORCED CONCRETE LEDGE

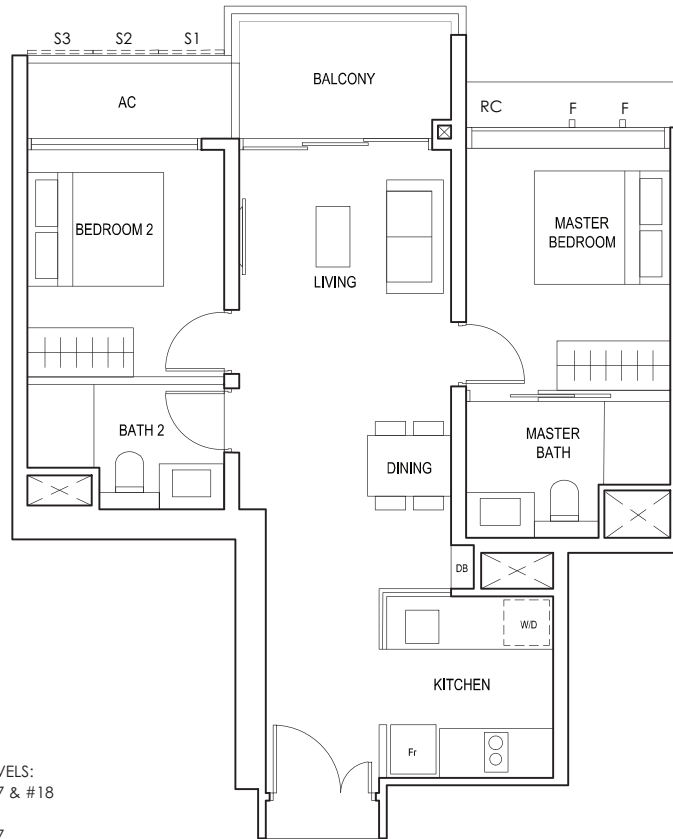
* AREA INCLUDES AIRCON (AC) LEDGE, BALCONY AND PRIVATE ENCLOSED SPACE (PES).
* THE BALCONY/PRIVATE ENCLOSED SPACE (PES) SHALL NOT BE ENCLOSED UNLESS WITH THE APPROVED BALCONY/PES SCREEN. FOR AN ILLUSTRATION OF THE APPROVED BALCONY/PES SCREEN, PLEASE REFER TO THE DIAGRAM ANNEXED HERETO AS "ANNEXURE 1".



2-BEDROOM PREMIUM

TYPE (2P)b

#02-32 to #18-32
66 sq m

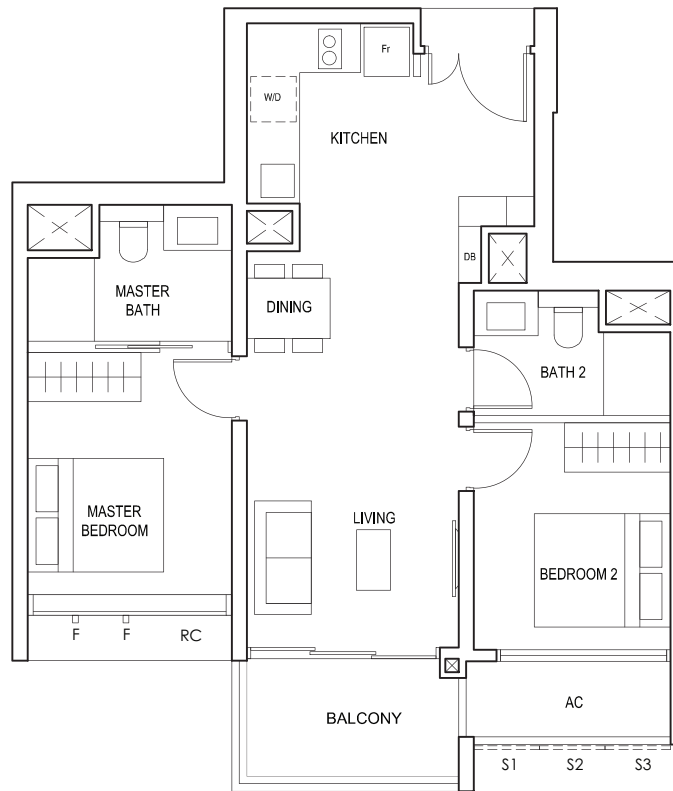


FULL HEIGHT ALUMINIUM PERFORATED SCREEN LOCATED AT LEVELS:
S1 - #02, #03, #05, #06, #07, #09, #10, #11, #13, #14, #15, #17 & #18
S2 - #02, #04, #06, #08, #10, #12, #14, #16 & #18
S3 - #03, #04, #05, #07, #08, #09, #11, #12, #13, #15, #16, #17

F - FULL HEIGHT ALUMINIUM FIN

TYPE (2P)c

#03-35 to #17-35
65 sq m



FULL HEIGHT ALUMINIUM PERFORATED SCREEN LOCATED AT LEVELS:
S1 - #03, #05, #06, #07, #09, #10, #11, #13, #14, #15 & #17
S2 - #04, #06, #08, #10, #12, #14 & #16
S3 - #03, #04, #05, #07, #08, #09, #11, #12, #13, #15, #16, #17

F - FULL HEIGHT ALUMINIUM FIN

LEGEND:
Fr - FRIDGE DB - DISTRIBUTION BOARD W/D - WASHER CUM DRYER
AC - AIRCON LEDGE RC - REINFORCED CONCRETE LEDGE

* AREA INCLUDES AIRCON (AC) LEDGE, BALCONY AND PRIVATE ENCLOSED SPACE (PES).
* THE BALCONY/PRIVATE ENCLOSED SPACE (PES) SHALL NOT BE ENCLOSED UNLESS WITH THE APPROVED BALCONY/PES SCREEN. FOR AN ILLUSTRATION OF THE APPROVED BALCONY/PES SCREEN, PLEASE REFER TO THE DIAGRAM ANNEXED HERETO AS "ANNEXURE 1".

