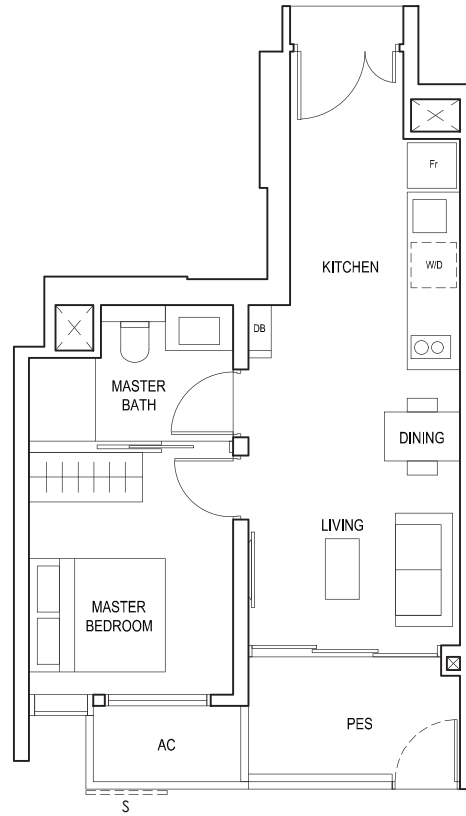


1-BEDROOM

TYPE (1)a1

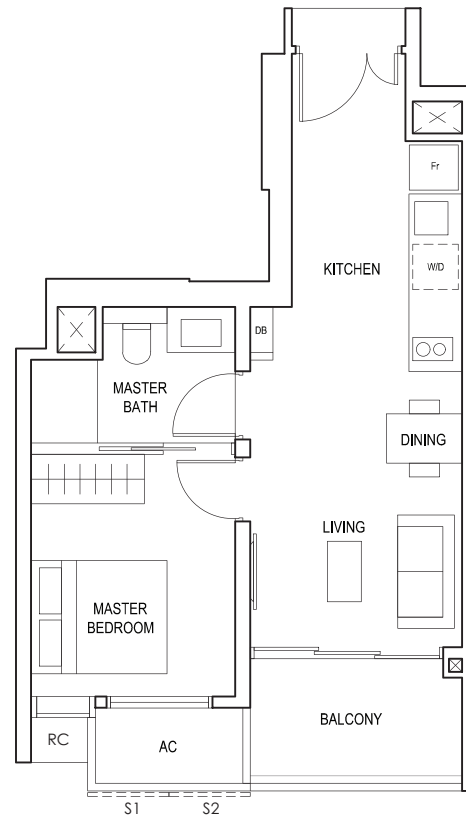
#01-05
45 sq m



S - FULL HEIGHT ALUMINIUM PERFORATED SCREEN

TYPE (1)a

#02-05 to #18-05
45 sq m



FULL HEIGHT ALUMINIUM PERFORATED SCREEN LOCATED AT LEVELS:

S1 - #03, #05, #07, #09, #11, #13, #15 & #17

S2 - #02, #04, #06, #08, #10, #12, #14, #16 & #18

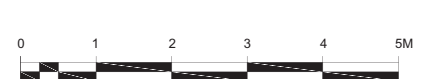
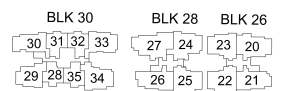
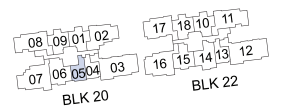
LEGEND:

Fr - FRIDGE DB - DISTRIBUTION BOARD W/D - WASHER CUM DRYER

AC - AIRCON LEDGE PES - PRIVATE ENCLOSED SPACE RC - REINFORCED CONCRETE LEDGE

* AREA INCLUDES AIRCON (AC) LEDGE, BALCONY AND PRIVATE ENCLOSED SPACE (PES).

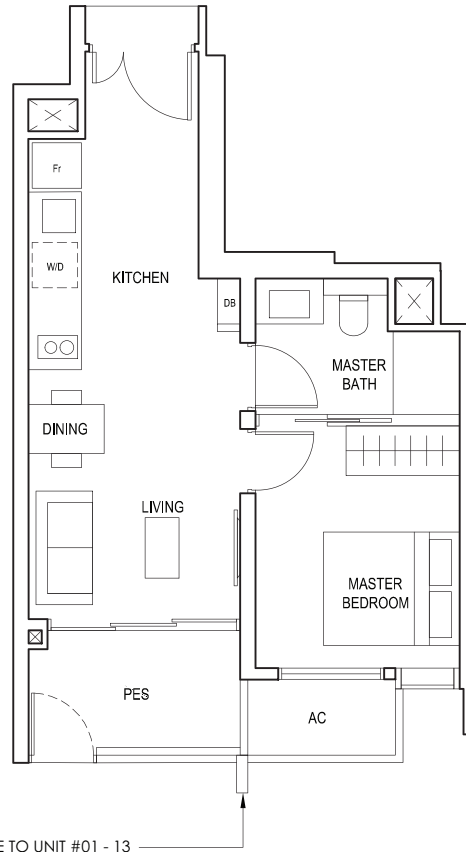
* THE BALCONY/PRIVATE ENCLOSED SPACE (PES) SHALL NOT BE ENCLOSED UNLESS WITH THE APPROVED BALCONY/PES SCREEN. FOR AN ILLUSTRATION OF THE APPROVED BALCONY/PES SCREEN, PLEASE REFER TO THE DIAGRAM ANNEXED HERETO AS "ANNEXURE 1".



1-BEDROOM

TYPE (1)b1

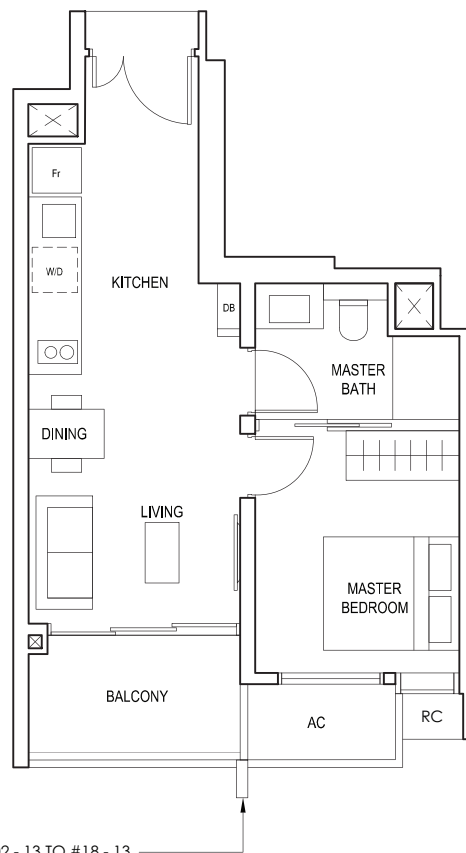
#01-04
#01-13
44 sq m



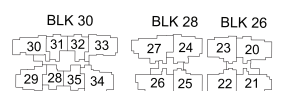
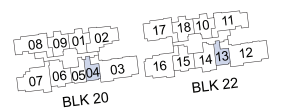
RC COLUMN ONLY APPLICABLE TO UNIT #01 - 13

TYPE (1)b

#02-04 to #18-04
#02-13 to #18-13
44 sq m



RC COLUMN ONLY APPLICABLE TO UNIT #02 - 13 TO #18 - 13



LEGEND:
Fr - FRIDGE DB - DISTRIBUTION BOARD W/D - WASHER CUM DRYER
AC - AIRCON LEDGE PES - PRIVATE ENCLOSED SPACE RC - REINFORCED CONCRETE LEDGE

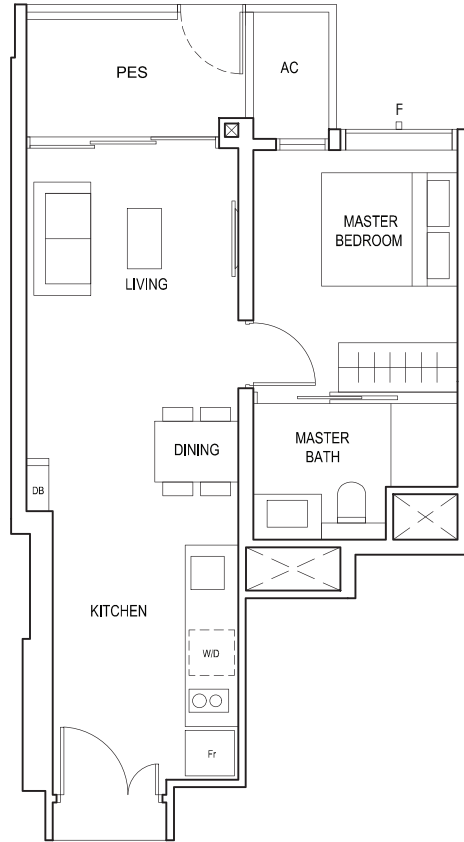
* AREA INCLUDES AIRCON (AC) LEDGE, BALCONY AND PRIVATE ENCLOSED SPACE (PES).
* THE BALCONY/PRIVATE ENCLOSED SPACE (PES) SHALL NOT BE ENCLOSED UNLESS WITH THE APPROVED BALCONY/PES SCREEN. FOR AN ILLUSTRATION OF THE APPROVED BALCONY/PES SCREEN, PLEASE REFER TO THE DIAGRAM ANNEXED HERETO AS "ANNEXURE 1".



1-BEDROOM

TYPE (1)c1

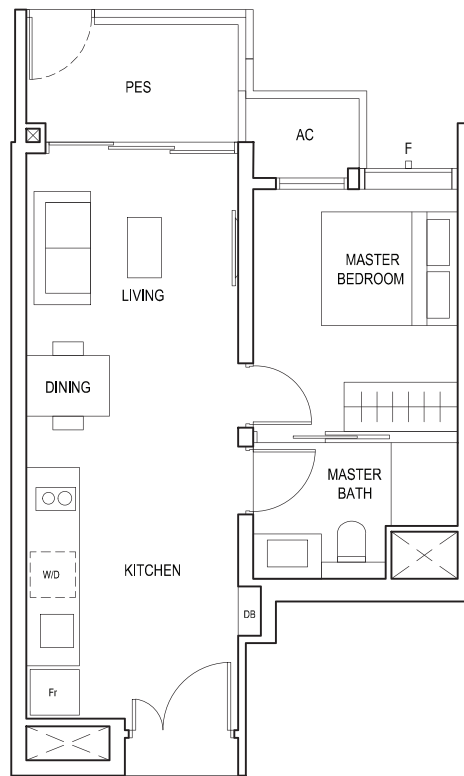
#01-32
48 sq m



F - FULL HEIGHT ALUMINIUM FIN

TYPE (1)d1

#05-09
#05-18
46 sq m



F - FULL HEIGHT ALUMINIUM FIN

LEGEND:
Fr - FRIDGE DB - DISTRIBUTION BOARD W/D - WASHER CUM DRYER
AC - AIRCON LEDGE PES - PRIVATE ENCLOSED SPACE

* AREA INCLUDES AIRCON (AC) LEDGE, BALCONY AND PRIVATE ENCLOSED SPACE (PES).
* THE BALCONY/PRIVATE ENCLOSED SPACE (PES) SHALL NOT BE ENCLOSED UNLESS WITH THE APPROVED BALCONY/PES SCREEN. FOR AN ILLUSTRATION OF THE APPROVED BALCONY/PES SCREEN, PLEASE REFER TO THE DIAGRAM ANNEXED HERETO AS "ANNEXURE 1".

